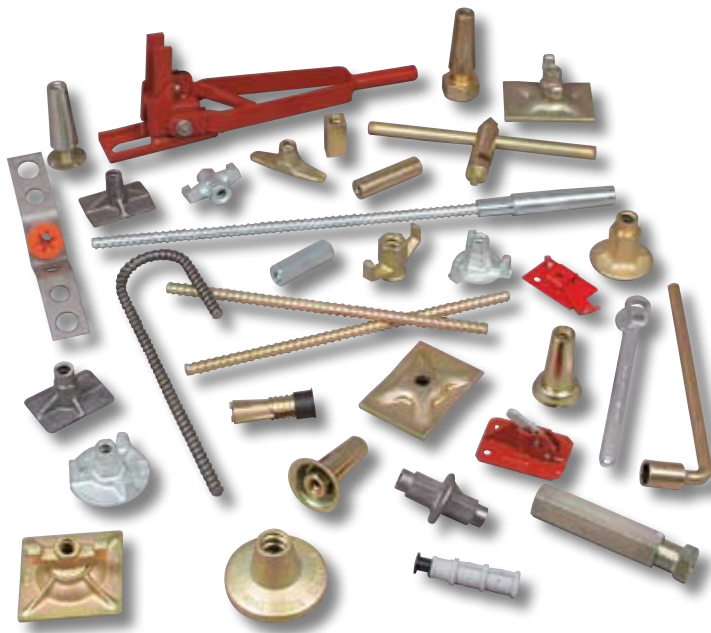




*Technique Béton*

## Formtie Accessories



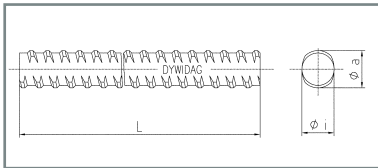
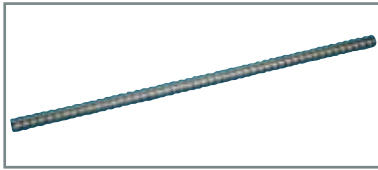




## Table of Contents

|   |           |
|---|-----------|
| 01. <u>Threadbars</u>                                   | <b>04</b> |
| 02. <u>Anchorage in Concrete</u>                        | <b>05</b> |
| 03. <u>Nuts and Couplers</u>                            | <b>08</b> |
| 04. <u>Water Stops</u>                                  | <b>12</b> |
| 05. <u>Cones for Lost Formties</u>                      | <b>14</b> |
| 06. <u>Cones for Climbing Formwork</u>                  | <b>15</b> |
| 07. <u>Special Accessories</u>                          | <b>18</b> |
| 08. <u>Clamps for Reinforcement Bars or Smooth Bars</u> | <b>19</b> |
| 09. <u>Tools</u>  | <b>20</b> |
| 10. <u>Safety Advices</u>                               | <b>21</b> |
| 11. <u>Application Examples</u>                         | <b>22</b> |

## DYWIDAG Threadbar, not weldable

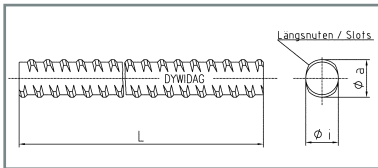
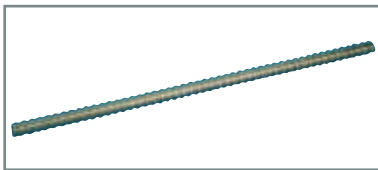


| Article-No. | Ø<br>[mm] | Steel Grade | Max. Load<br>[kN] | Working Load<br>[kN] | Weight<br>[kg/m] |
|-------------|-----------|-------------|-------------------|----------------------|------------------|
| 15 F 0105   | 15/17     | St 900/1100 | 195               | 90                   | 1.44             |
| 20 F 0105   | 20/23     | St 900/1100 | 345               | 160                  | 2.56             |
| 26 WR 0100  | 26.5/30   | St 950/1050 | 580               | 300                  | 4.50             |

Hot rolled, subject to independent supervision in the framework of German bar approval  
Not weldable: Do not heat or weld the Threadbars, they may break.

All Threadbars also available galvanized □ Article no. .../V  
(example 15 F 0105/V)

## DYWIDAG Threadbar, weldable



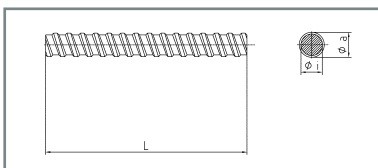
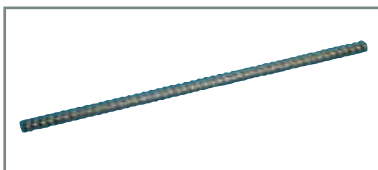
| Article-No. | Ø<br>[mm] | Steel Grade | Max. Load<br>[kN] | Working Load<br>[kN] | Weight<br>[kg/m] |
|-------------|-----------|-------------|-------------------|----------------------|------------------|
| 15 FA 0105  | 15/17     | St 900/1100 | 190               | 90                   | 1.44             |
| 20 FA 0105  | 20/23     | St 900/1100 | 345               | 160                  | 2.56             |
| 25 FA 0105  | 25/28     | St 900/1100 | 540               | 250                  | 3.85             |

Hot rolled, subject to independent supervision in the framework of German bar approval  
(except 25 FA 0105)

Weldable: for weldability and methods please contact DSI

All Threadbars also available galvanized □ Article no. .../V  
(example 15 FA 0105/V)

## MUKUSOL Threadbar, weldable



| Article-No. | Ø<br>[mm] | Max. Load<br>[kN] | Working Load<br>[kN] | Weight<br>[kg/m] |
|-------------|-----------|-------------------|----------------------|------------------|
| 12 FS 0000  | 12.0/14   | 60                | 30                   | 1.00             |
| 15 FS 0000  | 15/17     | 170               | 80                   | 1.50             |
| 15 VA 0000* | 15/17     | 150               | 70                   | 1.58             |
| 20 FS 0000  | 20/23     | 275               | 140                  | 2.60             |
| 26 ES 0000  | 26.5/30   | 500               | 240                  | 4.56             |

Cold rolled, \* Stainless Steel, grade 316 (V4A)

Weldable: for weldability and methods please contact DSI

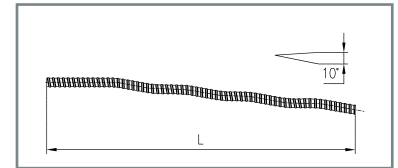
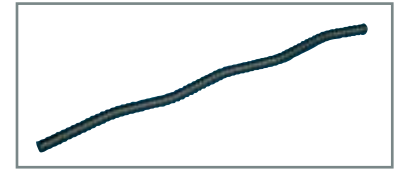
All Threadbars also available galvanized □ Article no. .../V  
(example 15 FS 0000/V)

The working loads of all products on this page depend on concrete strength, installation depth, distances between anchors and other factors. Please ask DSI for details.

## Wobble Anchor

| Article-No. | Bar Ø<br>[mm] | Length L<br>[mm] | Weight<br>[kg/pc] |
|-------------|---------------|------------------|-------------------|
| 15 FS 2080  | 15            | 550              | 0.82              |
| 20 FS 2080  | 20            | 700              | 1.82              |
| 26 ES 2080  | 26.5          | 800              | 3.70              |

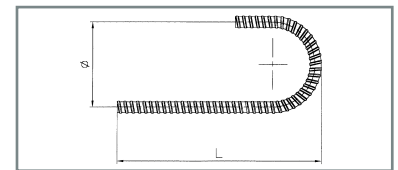
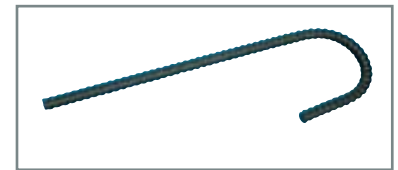
Made of MUKUSOL Threadbars  
On request: made of DYWIDAG Threadbars



## Hook Anchor

| Article-No.    | Bar Ø<br>[mm] | Length L<br>[mm] | Hook Ø<br>[mm] | Weight<br>[kg/pc] |
|----------------|---------------|------------------|----------------|-------------------|
| 15 FS 3047/250 | 15            | 250              | 100            | 0.68              |
| 15 FS 3047/450 | 15            | 450              | 100            | 1.00              |
| 20 FS 3047/600 | 20            | 600              | 150            | 2.20              |
| 26 ES 3047/800 | 26.5          | 800              | 200            | 5.50              |

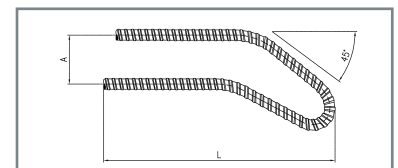
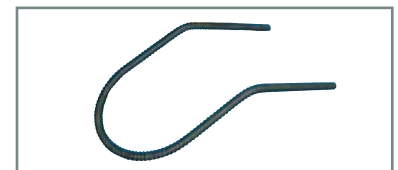
Made of MUKUSOL Threadbars  
On request: made of DYWIDAG Threadbars



## Loop Anchor

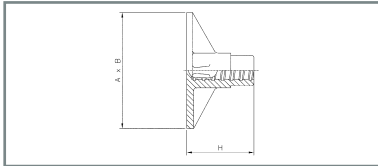
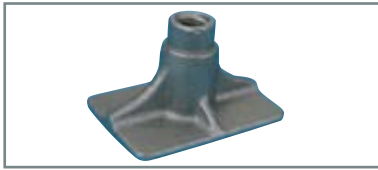
| Article-No. | Bar Ø<br>[mm] | Length L<br>[mm] | Width A<br>[mm] | Weight<br>[kg/pc] |
|-------------|---------------|------------------|-----------------|-------------------|
| 15 FS 3076  | 15            | 550              | 230             | 1.96              |
| 20 FS 3076  | 20            | 600              | 300             | 4.00              |
| 26 ES 3076  | 26.5          | 800              | 400             | 9.20              |

Made of MUKUSOL Threadbars  
For the anchorage of brace frames with a 45° angle  
On request: made of DYWIDAG Threadbars



The working loads of all products on this page depend on concrete strength, installation depth, distances between anchors and other factors. Please ask DSI for details.

## Fix Anchor



| Article-No.  | Bar Ø<br>[mm] | Plate Size<br>[mm] | Height<br>[mm] | Weight<br>[kg/pc] |
|--|---------------|--------------------|----------------|-------------------|
| 15 F 3074  | 15            | 100 x 70           | 60             | 0.48              |
| 15 F 3174  | 15            | 80 x 55            | 60             | 0.45              |
| 20 F 3074  | 20            | Ø 90               | 80             | 0.85              |
| 26 E 3074  | 26.5          | Ø 120              | 70             | 1.84              |
| Fix Anchor with Concrete Spacer Sleeve <sup>1)</sup> |               |                    |                |                   |
| 15 F 3074/S  | 15.0          | 100 x 70           | 60             | 0.65              |

Cast

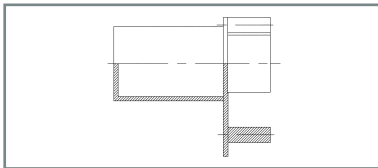
<sup>1)</sup> Including Nail Plug and Closing Plug, Installation depth = 125 mm

15 F 3074 and 15 F 3174 are installed by using PE Foot

20 F 3074 and 26 E 3074 are installed by using cones

For details please ask DSI.

## PE Foot

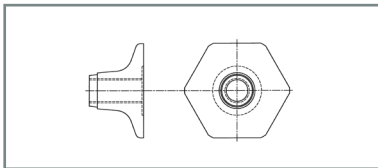


| Article-No. | Bar Ø<br>[mm] | nom. installation depth<br>[mm] | Weight<br>[kg/pc] |
|-------------|---------------|---------------------------------|-------------------|
| 15 F 3174/K | 15            | 85                              | 0.03              |

For assembly of Fix Anchors 15 F 3074 and 15 F 3174

Delivery includes Nails and PE-Plug

## Anchor Foot



| Article-No. | Bar Ø<br>[mm] | Plate Size A<br>[mm] | Height<br>[mm] | Bunch<br>[mm] | Weight<br>[kg/pc] |
|-------------|---------------|----------------------|----------------|---------------|-------------------|
| A 1714024   | 15            | Hex 60               | 52             | Ø 22          | 0.23              |
| A 2314052   | 20            | Hex 78               | 62             | Ø 32          | 0.50              |
| A 3014071   | 26.5          | Hex 115              | 67             | Ø 40          | 1.46              |

Forged, weldable

Bunch fits to PVC Tubes 22 x 26 mm (A 1714024),

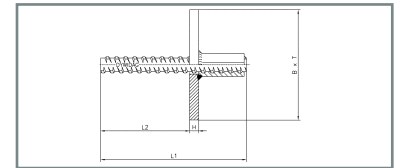
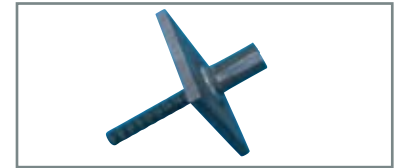
32 x 38 mm (A 2314052) and 40 x 46 mm (A 3014071)

The working loads of all products on this page, except Weldable Neck Flange, depend on concrete strength, installation depth, distances between anchors and other factors. Please ask DSI for details.

## Plate Anchor

| Article-No.   | Bar Ø<br>[mm] | Plate Size<br>[mm] | L1/L2<br>[mm] | Weight<br>[kg/pc] |
|---------------|---------------|--------------------|---------------|-------------------|
| 15 F 3058     | 15            | 120 x 100 x 10     | 160/100       | 1.30              |
| 15 F 3058/400 | 15            | 120 x 100 x 10     | 400/340       | 1.65              |
| 15 FS 3058    | 15            | 120 x 100 x 10     | 160/140       | 1.20              |
| 20 FS 3058    | 20            | 120 x 100 x 10     | 480/400       | 2.60              |

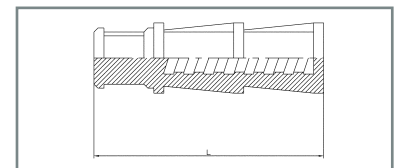
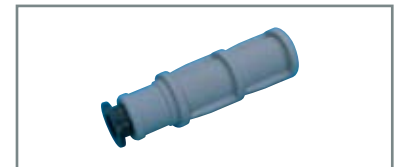
Installation with Cones



## Shuttering Sleeve

| Article-No. | Bar Ø<br>[mm] | Length<br>[mm] | Weight<br>[kg] |
|-------------|---------------|----------------|----------------|
| 15 F 3116   | 15            | 100            | 0.04           |

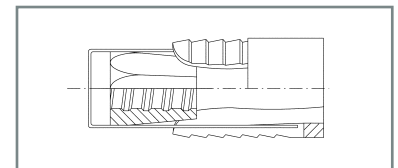
Delivery includes Nail Plug dia. 18 mm



## Expansion Shell

| Article-No. | Bar Ø<br>[mm] | Bore Hole Ø<br>[mm] | Weight<br>[kg/pc] |
|-------------|---------------|---------------------|-------------------|
| 15 F 2128   | 15            | 32 - 34             | 0.22              |
| 15 F 2135   | 15            | 35 - 37             | 0.30              |
| 15 F 2184   | 15            | 35 - 37             | 0.39              |
| 20 F 2136   | 20            | 43 - 48             | 0.40              |
| 20 F 2137   | 20            | 51 - 53             | 0.65              |
| 26 E 2221   | 26.5          | 61 - 63             | 0.75              |
| 26 E 2137   | 26.5          | 51 - 53             | 0.60              |

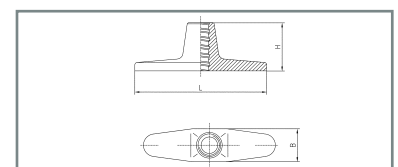
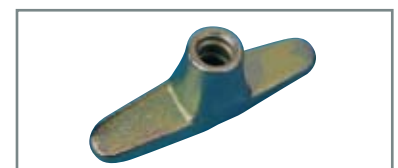
Please ask for the Installation Instruction



## Weldable Neck Flange

| Article-No. | Bar Ø<br>[mm] | L x B x H<br>[mm] | Weight<br>[kg/pc] |
|-------------|---------------|-------------------|-------------------|
| 15 F 3026   | 15            | 130 x 30 x 50     | 0.40              |

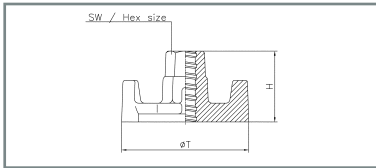
Weldable, Application with Steel Structures, working load max. 90 kN  
The application is shown on page 23



Unless noted, working Loads of Nuts and Couplers:

12 F ...: 30 kN; 15 F...: 90 kN; 20 F...: 150 kN; 25 FA...: 250 kN; 26 E...: 250 kN

## Wing Nut Bracket - cast



| Article-No.   | Bar Ø<br>[mm] | Plate Ø<br>[mm] | Height/Hex<br>[mm] | Chord <sup>1)</sup><br>[mm] | Weight<br>[kg/pc] |
|---------------|---------------|-----------------|--------------------|-----------------------------|-------------------|
| 12 F 2072     | 12            | 70              | 50/24              | --                          | 0.45              |
| 15 F 2072/70  | 15            | 70              | 53/27              | ≤ 35                        | 0.50              |
| 15 F 2072/90  | 15            | 90              | 53/27              | ≤ 35                        | 0.57              |
| 15 F 2072/100 | 15            | 100             | 53/27              | ≤ 35                        | 0.69              |
| 15 F 2072/110 | 15            | 110             | 53/27              | ≤ 35                        | 0.68              |
| 15 F 2072/130 | 15            | 130             | 53/27              | ≤ 35                        | 0.90              |
| 20 F 2072/130 | 20            | 130             | 65/36              | ≤ 40                        | 1.30              |

<sup>1)</sup> chord distance

Cast, galvanized

## Wing Nut Bracket - forged



| Article-No.  | Bar Ø<br>[mm] | Plate Dia.<br>[mm] | Height/Hex<br>[mm] | Weight<br>[kg/pc] |
|--------------|---------------|--------------------|--------------------|-------------------|
| 15 F 2068/65 | 15            | 65                 | 50/27              | 0.68              |
| 20 F 2068/80 | 20            | 80                 | 60/36              | 1.05              |

Forged, galvanized, not weldable

## Slope Plate



| Article-No. | Bar Ø<br>[mm] | Plate<br>[mm] | Height/Hex<br>[mm] | Inclination<br>[°] | Weight<br>[kg/pc] |
|-------------|---------------|---------------|--------------------|--------------------|-------------------|
| 15 F 1026   | 15            | 120 x 120     | 65/27              | max 15             | 1.14              |
| 15 F 1030   | 15            | Ø 120         | 65/27              | max 5              | 0.92              |
| 20 F 1030   | 20            | Ø 130         | 85/36              | max 10             | 1.52              |

Galvanized, for inclined Formwork

15 F 1026/15 F 1030: Cast

20 F 1030: Forged

15 F 1026 and 20 F 1030 for the use with steel chords.

Unless noted, working Loads of Nuts and Couplers:

12 F ...: 30 kN; 15 F...: 90 kN; 20 F...: 150 kN; 25 FA...: 250 kN; 26 E...: 250 kN

## Combination Plate

| Article-No. | Bar Ø<br>[mm] | Plate<br>[mm]  | Hex<br>[mm] | Weight<br>[kg/pc] |
|-------------|---------------|----------------|-------------|-------------------|
| 15 F 1020   | 15            | 120 x 120 x 10 | 27          | 1.42              |
| 15 F 1021   | 15            | 140 x 100 x 10 | 27          | 1.42              |
| 15 F 1023   | 15            | 200 x 150 x 10 | 27          | 2.70              |

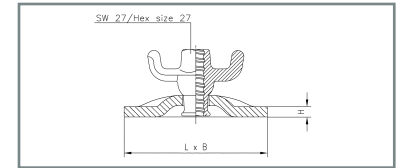
Galvanized, Nut: forged, Plate: steel S235,

max. inclination of nut: 5°

15 F 1020: Working load 20 kN if supported on timber.

15 F 1021: For the use with steel chords.

15 F 1023: Working load 50 kN if supported on timber.



## Plate Washer

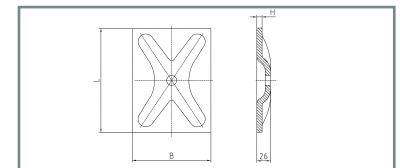
| Article-No. | Bar Ø<br>[mm] | Plate<br>[mm]  | Hole Ø<br>[mm] | Weight<br>[kg/pc] |
|-------------|---------------|----------------|----------------|-------------------|
| 15 F 2062   | 15            | 140 x 100 x 10 | 20             | 1.15              |
| 15 F 2066   | 15            | 120 x 120 x 10 | 20             | 1.10              |
| 15 F 2097   | 15            | 200 x 150 x 10 | 20             | 2.30              |

Galvanized, steel grade S235 or similar,

15 F 2062: For the use with steel chords.

15 F 2066: Working load 20 kN if supported on timber.

15 F 2097: Working load 50 kN if supported on timber.

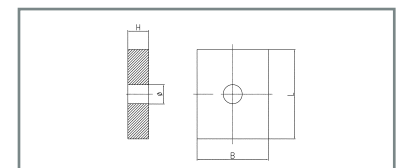
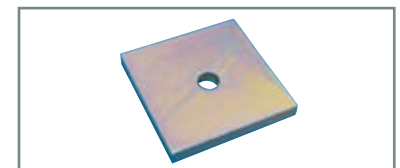


## Flat Bearing Plate

| Article-No. | Bar Ø<br>[mm] | Dimensions*<br>[mm] | Hole Ø<br>[mm] | Weight<br>[kg/pc] |
|-------------|---------------|---------------------|----------------|-------------------|
| 15 F 2122   | 15            | 120 x 120 x 15      | 20             | 1.60              |
| 20 F 2122   | 20            | 120 x 120 x 20      | 25             | 2.15              |
| 25 FA 2122  | 25            | 150 x 120 x 30      | 30             | 4.00              |
| 26 E 2122   | 26.5          | 150 x 120 x 30      | 32             | 4.00              |

All Bearing Plates also available galvanized □ Article No. .../V  
(example: 15 F 2122/V)

\* Further dimensions available on request

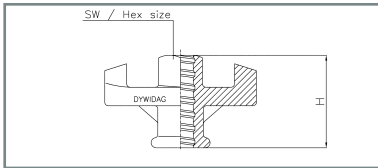


# Nuts and Couplers

Unless noted, working Loads of Nuts and Couplers:

12 F ...: 30 kN; 15 F...: 90 kN; 20 F...: 150 kN; 25 FA...: 250 kN; 26 E...: 250 kN

## Wing Nut - Cast



| Article-No. | Bar Ø<br>[mm] | Height<br>[mm] | Hex<br>[mm] | Weight<br>[kg/pc] |
|-------------|---------------|----------------|-------------|-------------------|
| 12 F 2071   | 12            | 50             | 24          | 0.19              |
| 15 F 2071   | 15            | 55             | 27          | 0.31              |
| 20 F 2177   | 20            | 60             | 36          | 0.48              |
| 26 E 2177   | 26.5          | 65             | 46          | 0.90              |

cast, galvanized

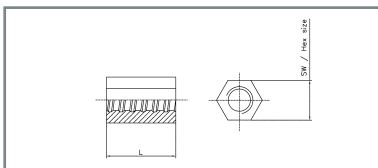
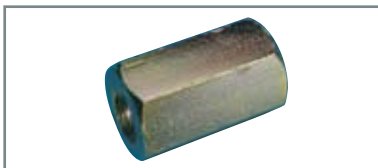
## Wing Nut - Forged



| Article-No. | Bar Ø<br>[mm] | Height<br>[mm] | Hex<br>[mm] | Weight<br>[kg/pc] |
|-------------|---------------|----------------|-------------|-------------------|
| 15 F 2067   | 15            | 50             | 27          | 0.36              |

forged, galvanized

## Hex Nut/Lock Nut



| Article-No.   | Bar Ø<br>[mm] | Length<br>[mm] | Hex<br>[mm] | Weldable         | Weight<br>[kg/pc] |
|---|---------------|----------------|-------------|------------------|-------------------|
| Hex Nuts – designed to take the full bar load <sup>1)</sup> |               |                |             |                  |                   |
| 15 F 2002/50  | 15            | 50             | 30          | Yes              | 0.22              |
| 15 F 2002/70  | 15            | 70             | 30          | Yes              | 0.30              |
| 15 VA 2002/50   | 15            | 50             | 30          | -- <sup>2)</sup> | 0.22              |
| 20 F 2002/70  | 20            | 70             | 36          | Yes              | 0.40              |
| 25 FA 2002/80   | 25            | 80             | 41          | --               | 0.60              |
| 26 E 2002/60 <sup>1)</sup>                                  | 26.5          | 60             | 46          | --               | 0.60              |
| 26 E 2002/80  | 26.5          | 80             | 46          | --               | 0.80              |
| Lock Nuts – designed for securing, not for taking bar loads |               |                |             |                  |                   |
| 15 F 2040/30  | 15            | 30             | 30          | Yes              | 0.13              |
| 20 F 2040/30  | 20            | 30             | 36          | Yes              | 0.16              |
| 26 E 2040/30  | 26.5          | 30             | 46          | --               | 0.30              |

<sup>1)</sup> Working Load of 26 E 2002/60: 200 kN

<sup>2)</sup> Stainless Steel, grade 316 (V4A)

All Hex Nuts also available galvanized □ Article No. .../V  
(example: 15 F 2002/50/V)

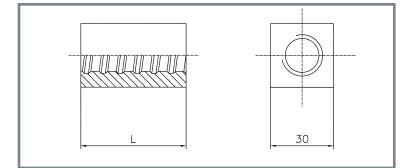
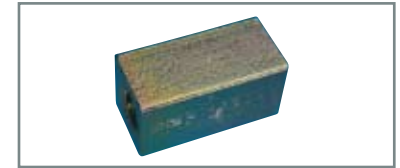
Unless noted, working Loads of Nuts and Couplers:

12 F ....: 30 kN; 15 F....: 90 kN; 20 F....: 150 kN; 25 FA....: 250 kN; 26 E....: 250 kN

## Square Nut

| Article-No.                | Bar Ø<br>[mm] | Length<br>[mm] | Hex<br>[mm] | Weight<br>[kg/pc] |
|----------------------------|---------------|----------------|-------------|-------------------|
| 15 F 2028/35 <sup>1)</sup> | 15            | 35             | 30          | 0.18              |
| 15 F 2028/60               | 15            | 60             | 30          | 0.32              |

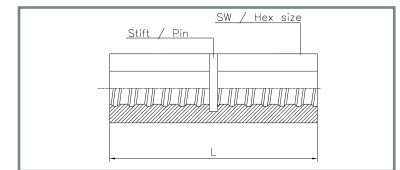
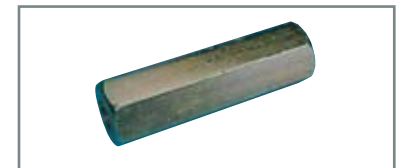
<sup>1)</sup> Lock Nut, not designed to take the full load of the Threadbar  
All Square Nuts also available galvanized □ Article No. .../V  
(example: 15 F 2028/35/V)



## Hex Couplers

| Article-No.                 | Bar Ø<br>[mm] | Length<br>[mm] | Hex<br>[mm] | Weight<br>[kg/pc] |
|-----------------------------|---------------|----------------|-------------|-------------------|
| 15 F 2002/90 <sup>1)</sup>  | 15            | 90             | 30          | 0.39              |
| 15 F 3005                   | 15            | 105            | 30          | 0.46              |
| 20 F 3005                   | 20            | 130            | 36          | 0.77              |
| 26 E 3005/120 <sup>2)</sup> | 26.5          | 120            | 46          | 1.10              |
| 26 E 3005/150               | 26.5          | 150            | 46          | 1.38              |

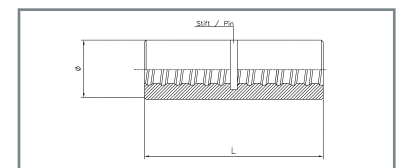
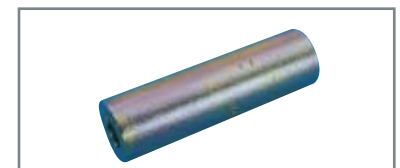
<sup>1)</sup> Working Load of 15 F 2002/90: 80 kN, <sup>2)</sup> Working Load of 26 E 3005/120: 200 kN  
Screwing-in length is guaranteed by stop-pin.  
All Couplers also available galvanized □ Article No. .../V  
(example: 15 F 3005/V)



## Round Couplers

| Article-No. | Bar Ø<br>[mm] | Length<br>[mm] | Diameter<br>[mm] | Weight<br>[kg/pc] |
|-------------|---------------|----------------|------------------|-------------------|
| 15 F 3003   | 15            | 105            | 30               | 0.40              |
| 20 F 3003   | 20            | 130            | 40               | 0.89              |
| 26 E 3003   | 26.5          | 150            | 50               | 1.50              |

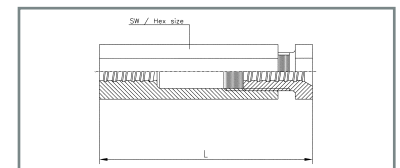
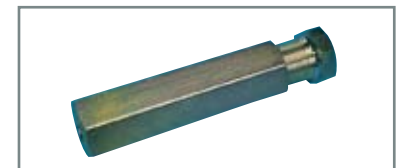
Screwing-in length is guaranteed by stop-pin.  
All Couplers also available galvanized □ Article No. .../V  
(example: 15 F 3003/V)



## Turnbuckle Splice

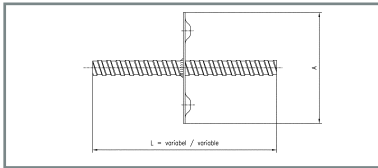
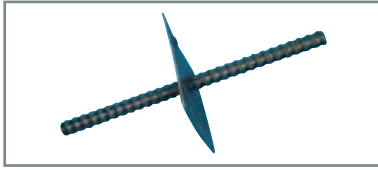
| Article-No.  | Bar Ø<br>[mm] | Length<br>[mm] | Hex<br>[mm] | Weight<br>[kg/pc] |
|--------------|---------------|----------------|-------------|-------------------|
| 15 F 3013/14 | 15            | 185            | 41          | 1.40              |
| 20 F 3013/14 | 20            | 190            | 46          | 1.60              |
| 26 E 3013/14 | 26.5          | 250            | 60          | 3.86              |

For screwing and tensioning with two fixed bar ends.  
15 F 3013/14: Tensile force 40 kN if a torque of 0.5 kNm is applied  
20 F 3013/14: Tensile force 70 kN if a torque of 0.75 kNm is applied  
26 E 3013/14: Tensile force 100 kN if a torque of 1.0 kNm is applied



Water Stops prevent water from seeping alongside the Threadbar. Data Sheets, Installation Instructions and Test Results are available on request.

## Water Stop Type N



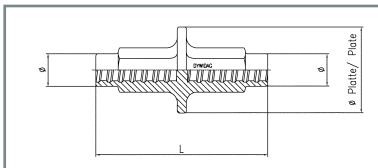
| Article-No. | Bar Ø<br>[mm] | Plate Size<br>[mm] | Weight<br>[kg/pc] |
|-------------|---------------|--------------------|-------------------|
| 15 FS 3043  | 15            | 120 x 120 x 2      | 0.20              |
| 20 FS 3043  | 20            | 120 x 120 x 2      | 0.20              |
| 26 ES 3043  | 26.5          | 120 x 120 x 2      | 0.20              |

Only plate without Threadbar, which has to be ordered separately.

□ Calculation of bar length:

Bar length = wall thickness minus double concrete cover of cone

## Water Stop Type G



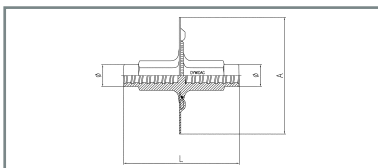
| Article-No. | Bar Ø<br>[mm] | Length<br>[mm] | Plate Ø<br>[mm] | Bunch Ø<br>[mm]  | Weight<br>[kg/pc] |
|-------------|---------------|----------------|-----------------|------------------|-------------------|
| 15 F 3093   | 15            | 110            | 65              | 26 <sup>1)</sup> | 0.55              |
| 15 F 3093/B | 15            | 130            | 110             | 26 <sup>2)</sup> | 0.98              |
| 20 F 3093   | 20            | 160            | 80              | 31               | 1.35              |

Cast

<sup>1)</sup> For tubes with inner diameter 26 mm

<sup>2)</sup> For tubes with outer diameter 26 mm

## Water Stop Type S



| Article-No. | Bar Ø<br>[mm] | Length<br>[mm] | Plate Ø<br>[mm] | Bunch Ø<br>[mm]  | Weight<br>[kg/pc] |
|-------------|---------------|----------------|-----------------|------------------|-------------------|
| 15 F 3044   | 15            | 110            | 120 x 120       | 26 <sup>1)</sup> | 0.76              |
| 20 F 3044   | 20            | 160            | 120 x 120       | 31               | 1.55              |

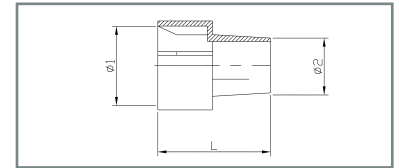
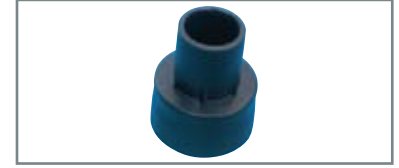
Cast

<sup>1)</sup> For tubes with inner diameter 26 mm

## PE – Reduction Piece

| Article-No. | Bar Ø<br>[mm] | Length<br>[mm] | Diameter<br>[mm] | Weight<br>[kg/pc] |
|-------------|---------------|----------------|------------------|-------------------|
| 15 F 3093/K | 15            | 33             | 26/22            | 0.01              |

For the connection of the Water Stops type 15 F 3093 and 15 F 3044 to tubes with internal diameter 22 mm.



## Water Stop Plus – Bentonite Layer

| Article-No.  | Bar Ø<br>[mm] | Plate Size<br>[mm] | Weight<br>[kg/pc] |
|--------------|---------------|--------------------|-------------------|
| 15 FS 3043/A | 15            | 120 x 120 x 2      | 0.04              |
| 20 FS 3043/A | 20            | 120 x 120 x 2      | 0.04              |
| 26 ES 3043/A | 26.5          | 120 x 120 x 2      | 0.04              |

Bentonite coating which swells when in contact with water and seals up the concrete actively and permanently.

On stock for Water Stop Type N

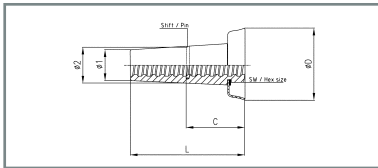
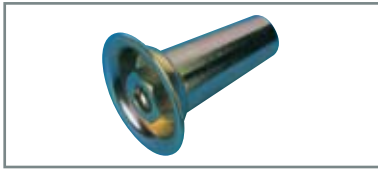
On request for Water Stop Type G, Water Stop Type S



# Cones for Lost Formties

Unless noted, Working Loads of Cones for Lost Formties:  
15 F...: 90 kN; 20 F...: 150 kN; 26 E...: 250 kN

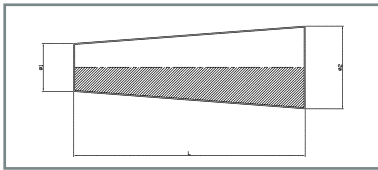
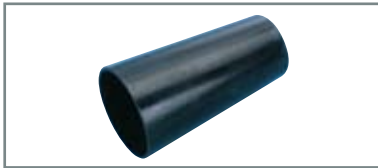
## Steel Cone



| Article-No. | Bar Ø<br>[mm] | Ø1/Ø2/ØD<br>[mm] | L<br>[mm] | Hex<br>[mm] | C <sup>1)</sup><br>[mm] | Weight<br>[kg/pc] |
|-------------|---------------|------------------|-----------|-------------|-------------------------|-------------------|
| 15 F 3034   | 15            | 30/43/62         | 100       | 30          | 50                      | 0.60              |
| 15 F 3034/B | 15            | 30/43/76         | 100       | 30          | 50                      | 0.67              |
| 20 F 3034   | 20            | 33/46/62         | 130       | 36          | 65                      | 0.95              |
| 26 E 3034   | 26.5          | 40/54/95         | 150       | 41          | 75                      | 1.24              |

<sup>1)</sup> C = Concrete Cover, all cones galvanized  
For de-installation, please use the hexagon wrench .. F 7044

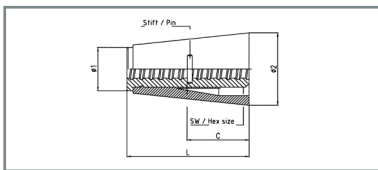
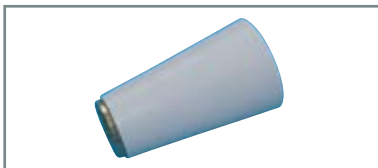
## PE-Sleeve for Steel Cone



| Article-No. | For Cone                 | L<br>[mm] | Ø1/Ø2<br>[mm] | Weight<br>[kg/pc] |
|-------------|--------------------------|-----------|---------------|-------------------|
| 15 F 3034/K | 15 F 3034<br>15 F 3034/B | 80        | 31/41         | 0.01              |
| 20 F 3034/K | 20 F 3034                | 110       | 34/44         | 0.01              |
| 26 E 3034/K | 26 E 3034                | 125       | 41/54         | 0.02              |

To ensure easy unscrewing of Steel Cones, the PE-Sleeve is put on the cone before assembly.

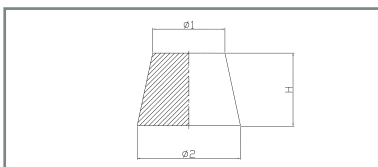
## Steel-Plastic Cone



| Article-No. | Bar Ø<br>[mm] | Ø1/Ø2<br>[mm] | L<br>[mm] | Hex<br>[mm] | C <sup>1)</sup><br>[mm] | Weight<br>[kg/pc] |
|-------------|---------------|---------------|-----------|-------------|-------------------------|-------------------|
| 15 F 3037   | 15            | 40/60         | 100       | 27          | 50                      | 0.45              |
| 20 F 3037   | 20            | 43/71         | 125       | 32          | 65                      | 0.80              |
| 26 E 3037   | 26.5          | 60/102        | 135       | 46          | 65                      | 1.65              |

<sup>1)</sup> C = Concrete Cover  
Consists of galvanized steel coupler with plastic cover  
For de-installation, please use the hexagon wrench .. F 7044

## Concrete Plug



| Article-No. | For Cone  | Ø1/Ø2<br>[mm] | Height<br>[mm] | Weight<br>[kg/pc] |
|-------------|-----------|---------------|----------------|-------------------|
| 15 F 3037/S | 15 F 3037 | 52/68         | 30             | 0.15              |
| 20 F 3037/S | 20 F 3037 | 59/69         | 40             | 0.27              |

For re-locking of the cone holes of the Steel-Plastic Cone.

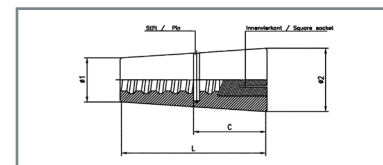
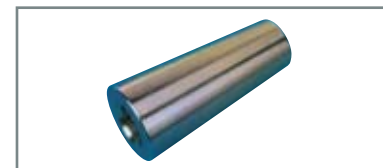
For the Anchorage of Climbing Formwork (Shear Loads) different systems can be used. In the following pages two standard systems are presented: a) DYWIDAG System b) Artéon System. Upon request we also develop and manufacture special solutions and products with individual design.

## A) DYWIDAG System for Climbing Formwork:

### Positioning Cone

| Article-No. | Thread<br>[mm] | Ø1/Ø2<br>[mm] | L<br>[mm] | ✳<br>[mm] | C <sup>1)</sup><br>[mm] | Weight<br>[kg/pc] |
|-------------|----------------|---------------|-----------|-----------|-------------------------|-------------------|
| 15 F 3073   | 15F/M24        | 30/43         | 100       | 18        | 50                      | 0.57              |
| 20 F 3073   | 20F/M27        | 33/46         | 130       | 20        | 65                      | 0.78              |
| 26 E 3073   | 26E/M33        | 40/54         | 150       | 24        | 75                      | 1.24              |

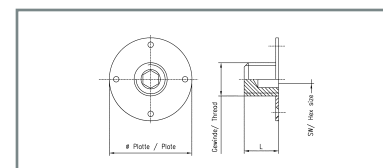
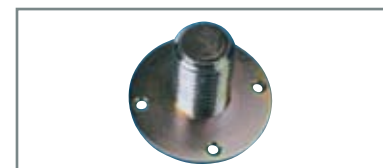
<sup>1)</sup> C = Concrete Cover, all Cones galvanized  
Positioning Cones are put in place before concreting.  
For de-installation, the square wrench .. F 7045 can be used.



### Nail Plate

| Article-No.  | Material | Thread<br>[mm] | Ø<br>[mm] | L<br>[mm] | Hex<br>[mm] | Weight<br>[kg/pc] |
|--------------|----------|----------------|-----------|-----------|-------------|-------------------|
| 15 F 3073/N  | Steel    | M 24           | 60        | 40        | 12          | 0.11              |
| 15 F 3073/PE | PE       | M 24           | 48        | 25        | 14          | 0.01              |
| 20 F 3073/N  | Steel    | M 27           | 65        | 25        | 12          | 0.20              |
| 20 F 3073/PE | PE       | M 27           | 58        | 25        | 14          | 0.02              |
| 26 E 3073/N  | Steel    | M 33           | 75        | 25        | 12          | 0.30              |

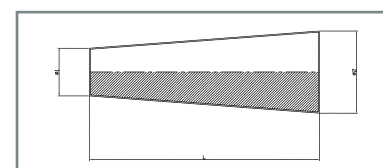
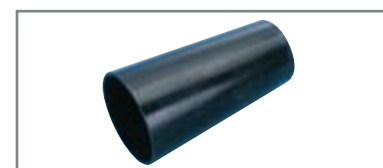
Galvanized, for fixing of Positioning Cones at the formwork.  
For de-installation, the square wrench 15 F 7043 can be used.



### PE – Sleeve

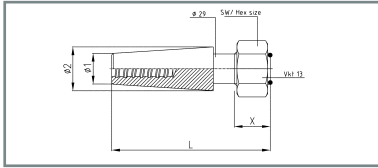
| Article-No. | For Cone  | L<br>[mm] | Ø1/Ø2<br>[mm] | Weight<br>[kg/pc] |
|-------------|-----------|-----------|---------------|-------------------|
| 15 F 3073/K | 15 F 3073 | 97        | 31/43         | 0.01              |
| 20 F 3073/K | 20 F 3073 | 110       | 34/44         | 0.01              |
| 26 E 3073/K | 26 E 3073 | 125       | 41/54         | 0.02              |

To ensure easy unscrewing of Positioning Cones, the PE-Sleeve is put on the cone before assembly.



# Cones for Climbing Formwork

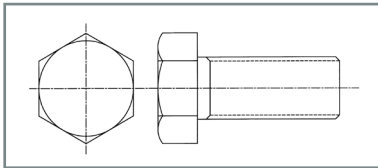
## Climbing Cone



| Article-No. | Ø1/Ø2<br>[mm] | L<br>[mm] | Hex<br>[mm] | X<br>[mm] | Shear Load <sup>1)</sup><br>[kN] | Weight<br>[kg/pc] |
|-------------|---------------|-----------|-------------|-----------|----------------------------------|-------------------|
| 15 F 3038   | 30/43         | 155       | 55          | 35        | 30                               | 1.28              |
| 20 F 3038   | 33/46         | 185       | 55          | 35        | 40                               | 1.56              |
| 26 E 3038   | 40/54         | 210       | 55          | 35        | 50                               | 2.50              |

Galvanized, <sup>1)</sup> at concrete strength of min. 10 N/mm<sup>2</sup>.  
Cone for shear load, Positioning Cone has to be removed.

## Hex Screw



| Article-No. | Thread | L<br>[mm]     | Hex<br>[mm] | Material<br>[mm] | Weight<br>[kg/pc] |
|-------------|--------|---------------|-------------|------------------|-------------------|
| 15 F 3073/S | M 24   | <sup>1)</sup> | 36          | 10.9             | <sup>1)</sup>     |
| 20 F 3073/S | M 27   | <sup>1)</sup> | 41          | 10.9             | <sup>1)</sup>     |
| 26 E 3073/S | M 33   | <sup>1)</sup> | 50          | 10.9             | <sup>1)</sup>     |

<sup>1)</sup> Length according to customer requirements, standard lengths:  
M 24 = 60 / 80 mm, M 27 = 60 / 80 mm, M 33 = 100 mm.

Hex Screw is screwed into Positioning Cone, which remains in the concrete and takes over the shear load (alternative solution to Climbing Cones).

## B) Artéon System for Climbing Formwork:

### Positioning Cone



| Article-No. | Bar Ø<br>[mm] | Type                   | D<br>[mm] | L<br>[mm] | Hex<br>[mm]   | L1 (C)<br>[mm] | Weight<br>[kg/pc] |
|-------------|---------------|------------------------|-----------|-----------|---------------|----------------|-------------------|
| A 1720030   | 15            | Steel/Plastic          | 55        | 110       | 30            | 58             | 0.44              |
| A 1721130   | 15            | Steel                  | 55        | 110       | 27            | 58             | 0.90              |
| A 1721430   | 15            | Magnetic <sup>1)</sup> | 55        | 110       | 12            | 58             | 0.46              |
| A 2320055   | 20            | Steel/Plastic          | 64        | 125       | 36            | 65             | 0.65              |
| A 2320056   | 20            | Steel                  | 64        | 125       | <sup>2)</sup> | 65             | 1.42              |
| A 2320055M  | 20            | Magnetic <sup>1)</sup> | 64        | 125       | 12            | 65             | 0.72              |

<sup>1)</sup> Magnetic cone for steel formwork

<sup>2)</sup> Screw out with a special tool

### Shear Cone



| Article-No. | Bar Ø<br>[mm] | Thread F   | D<br>[mm] | L/L1<br>[mm] | Hex<br>[mm] | Lf<br>[mm] | Weight<br>[kg/pc] |
|-------------|---------------|------------|-----------|--------------|-------------|------------|-------------------|
| A 1722031   | 15            | M 24 x 3.0 | 55        | 105/60       | 17          | 46         | 0.88              |
| A 1722131   | 15            | M 30 x 3.5 | 55        | 105/60       | 17          | 46         | 0.80              |
| A 2322056   | 20            | M 30 x 3.5 | 64        | 120/65       | 19          | 43         | 1.31              |

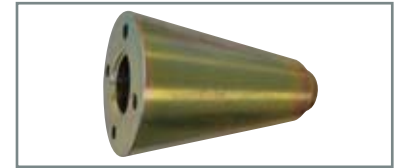
Steel Cone for shear load. To be used with a Hex Screw or an adapter.

# Cones for Climbing Formwork

## Shear Cone M 39

| Article-No. | Bar Ø<br>[mm] | Thread F   | D<br>[mm] | L/L1<br>[mm] | Lf<br>[mm] | Weight<br>[kg/pc] |
|-------------|---------------|------------|-----------|--------------|------------|-------------------|
| A 2324069   | 20            | M 39 x 4.0 | 88        | 150/85       | 73         | 3.50              |
| A 3024069   | 26.5          | M 39 x 4.0 | 88        | 155/85       | 72         | 3.45              |

Steel Cone for positioning and shear load. To be used with a Hex Screw or an adapter. Screw out with a special tool.



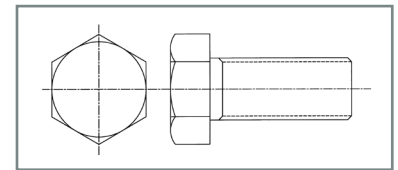
## Hex Screw

| Article-No.  | Thread | For Cone               | L<br>[mm] | Hex<br>[mm] | Material<br>[mm] | Weight<br>[kg/pc] |
|--------------|--------|------------------------|-----------|-------------|------------------|-------------------|
| A 1733141... | M 24   | A 1722031              | *         | 36          | 10.9             | *                 |
| A 503313...  | M 30   | A 1722131<br>A 2322056 | *         | 46          | 10.9             | *                 |
| A 3033939... | M 39   | A 2324069<br>A 3024069 | *         | 60          | 10.9             | *                 |

To be used with a Shear Cone

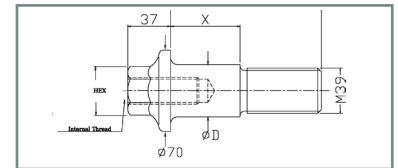
\* Length according to customer requirements, standard lengths:

M 24 = 50/70/90 mm, M 30 = 50/70/90/100 mm, M 39 = 90/100 mm



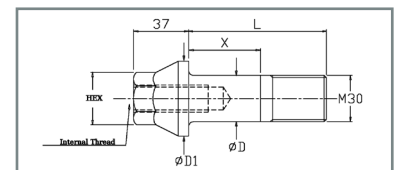
## Adapter M 39

| Article-No. | Internal Thread | For Cone  | L<br>[mm] | Hex<br>[mm] | Ø D/X<br>[mm] | Weight<br>[kg/pc] |
|-------------|-----------------|-----------|-----------|-------------|---------------|-------------------|
| A 3026130   | 20 F            | A 2324069 | 130       | 36          | 45/60         | 1.70              |
| A 3027130   | 26 E            | A 3024069 | 130       | 36          | 45/60         | 1.52              |



## Adapter M 30

| Article-No. | Internal Thread | For Cone  | L<br>[mm] | Hex<br>[mm] | Ø D/X<br>[mm] | Weight<br>[kg/pc] |
|-------------|-----------------|-----------|-----------|-------------|---------------|-------------------|
| A 1726037   | 15 F            | A 1722131 | 73        | 30          | 31/29         | 0.68              |
| A 1726038   | 15 F            | A 1722131 | 92        | 30          | 31/50         | 0.73              |
| A 2326358   | 20 F            | A 2322056 | 93        | 36          | 40/51         | 1.10              |



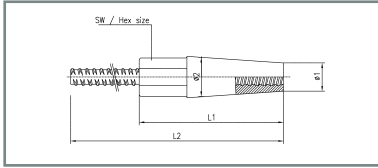
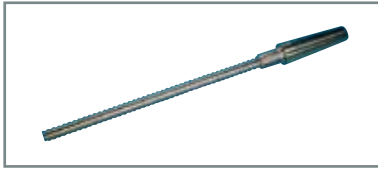
## Concrete Plug

| Article-No. | For Cone Ø<br>[mm] | L<br>[mm] | Ø D<br>[mm] | Weight<br>[kg/pc] |
|-------------|--------------------|-----------|-------------|-------------------|
| A 1725100   | 55                 | 46        | 54          | 0.19              |
| A 2325050   | 64                 | 60        | 63          | 0.29              |
| A 3025100   | 88                 | 50        | 86          | 0.57              |

To replace Shear Cones after use.



## Shebolt (Anchor Head)

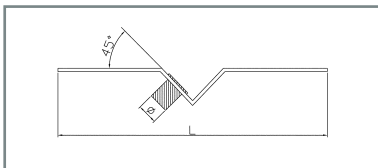


| Article-No.  | Bar Ø<br>[mm] | Ø1/Ø2/Hex<br>[mm] | L1/L2<br>[mm] | Weight<br>[kg/pc] |
|--------------|---------------|-------------------|---------------|-------------------|
| 15 F 3045/28 | 15            | 28/32/24          | 200/750       | 1.60              |
| 20 F 3045    | 20            | 33/46/36          | 200/650       | 2.50              |
| 26 ES 3045   | 26.5          | 40/54/46          | 210/650       | 4.74              |

Galvanized.

The application is shown on page 22.

## V-Fix



| Article-No. | Bar Ø<br>[mm] | Length<br>[mm] | Bunch Diameter Ø<br>[mm] | Inclination | Weight<br>[kg/pc] |
|-------------|---------------|----------------|--------------------------|-------------|-------------------|
| 15 F 5120   | 15            | 300            | 22                       | 45 °        | 0.44              |
| 20 F 5120   | 20            | 300            | 28                       | 45 °        | 0.44              |
| 26 E 5120   | 26.5          | 300            | 36                       | 45 °        | 0.44              |

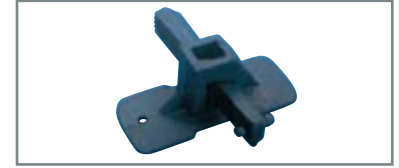
Ensures the accurate keeping of a 45° angle for the anchoring of walls worked fair on one side.

# Clamps for Reinforcement Bars or Smooth Bars

## Cam Clamp 4 - 10 mm

| Article-No. | Plate<br>[mm] | Weight<br>[kg/pc] |
|-------------|---------------|-------------------|
| 000 5114    | 105 x 40      | 0.44              |

For bars from diameter 4 to 10 mm.



## Cam Clamp 7 - 12 mm

| Article-No. | Plate<br>[mm] | Weight<br>[kg/pc] |
|-------------|---------------|-------------------|
| 000 5115    | 120 x 50      | 0.51              |

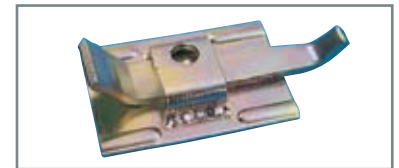
For bars from diameter 7 to 12 mm.



## Cam Clamp < 8 mm

| Article-No. | Plate<br>[mm] | Weight<br>[kg/pc] |
|-------------|---------------|-------------------|
| 000 5116    | 90 x 60       | 0.35              |

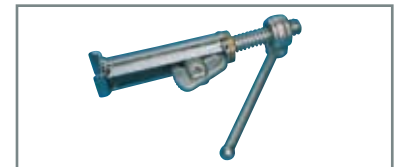
For bars up to diameter 8 mm.



## Spindle Spanner for Cam Clamps

| Article-No. | Weight<br>[kg/pc] |
|-------------|-------------------|
| 000 5117    | 1.23              |

Tool for tensioning of Cam Clamps.



## Spring Clamp 4 -10 mm

| Article-No. | Plate<br>[mm] | Weight<br>[kg/pc] |
|-------------|---------------|-------------------|
| 000 5112    | 105 x 60      | 0.46              |

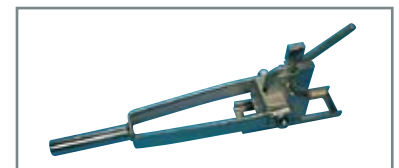
For round bars from diameter 4 to 10 mm. Painted.



## Spanner for Spring Clamps

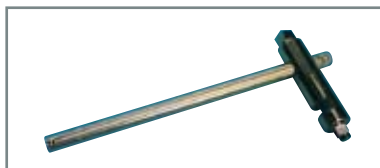
| Article-No. | Weight<br>[kg/pc] |
|-------------|-------------------|
| 000 5113    | 2.90              |

Tool for tensioning of Spring Clamps.



Additional Tools are available on request.

## Universal Wrench

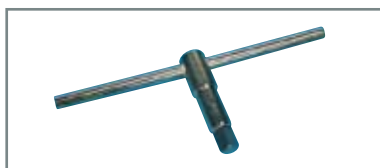


| Article-No. | Weight<br>[kg/pc] |
|-------------|-------------------|
| 15 F 7043   | 1.56              |

Universal tool with following features:

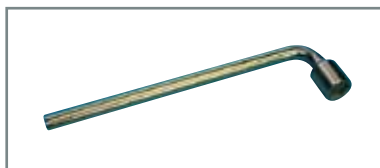
- ✓ Square 18 mm, for Positioning Cone 15 F 3073
- ✓ Hex size 12 mm, for all Nail Plates ...3073/N
- ✓ Square 13 mm, for all Climbing Cones ...3038
- ✓ Wrench for DYWIDAG Threadbars 15 mm

## Square Wrench



| Article-No.  | ⌘<br>[mm] | Description                    | Weight<br>[kg/pc] |
|--------------|-----------|--------------------------------|-------------------|
| 15 F 7045    | 13        | For all Climbing Cones         | 1.84              |
| 15 F 7045/18 | 18        | For Positioning Cone 15 F 3073 | 1.84              |
| 20 F 7045/20 | 20        | For Positioning Cone 20 F 3073 | 0.85              |
| 26 E 7045/24 | 24        | For Positioning Cone 26 E 3073 | 1.10              |

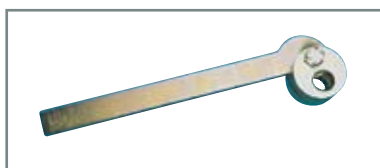
## Hexagon Wrench



| Article-No.  | Hex size<br>[mm] | Fits to ... (examples)         | Weight<br>[kg/pc] |
|--------------|------------------|--------------------------------|-------------------|
| 12 F 7044/24 | 24               | 12 F 2071, 12 F 2072           | 0.96              |
| 15 F 7044/27 | 27               | 15 F 3037 – Steel Plastic Cone | 1.16              |
| 15 F 7044/30 | 30               | 15 F 3034 – Steel Cone         | 1.58              |
| 20 F 7044/32 | 32               | 20 F 3037 – Steel Plastic Cone | 1.90              |
| 20 F 7044/36 | 36               | 20 F 3034 – Steel Cone         | 2.36              |
| 26 E 7044/41 | 41               | 26 E 3034 – Steel Cone         | 3.00              |
| 26 E 7044/46 | 46               | 26 E 2002 – Hex Nut            | 3.58              |

Tool for the installation of Hex Nuts and Cones.

## Wrench for Threadbar



| Article-No. | Weight<br>[kg/pc] |
|-------------|-------------------|
| 15 F 5121   | 0.25              |

Tool for all Threadbars 15 mm

## Wrench for DYWIDAG Threadbars



| Article-No. |                                       | Weight<br>[kg/pc] |
|-------------|---------------------------------------|-------------------|
| 15 F 5122   | For DYWIDAG Threadbars 15 and 20 mm   | 2.00              |
| 26 E 5122   | For DYWIDAG Threadbars 20 and 26.5 mm | 2.00              |

Tool for all DYWIDAG Threadbars dia. 15, 20 and 26.5 mm.

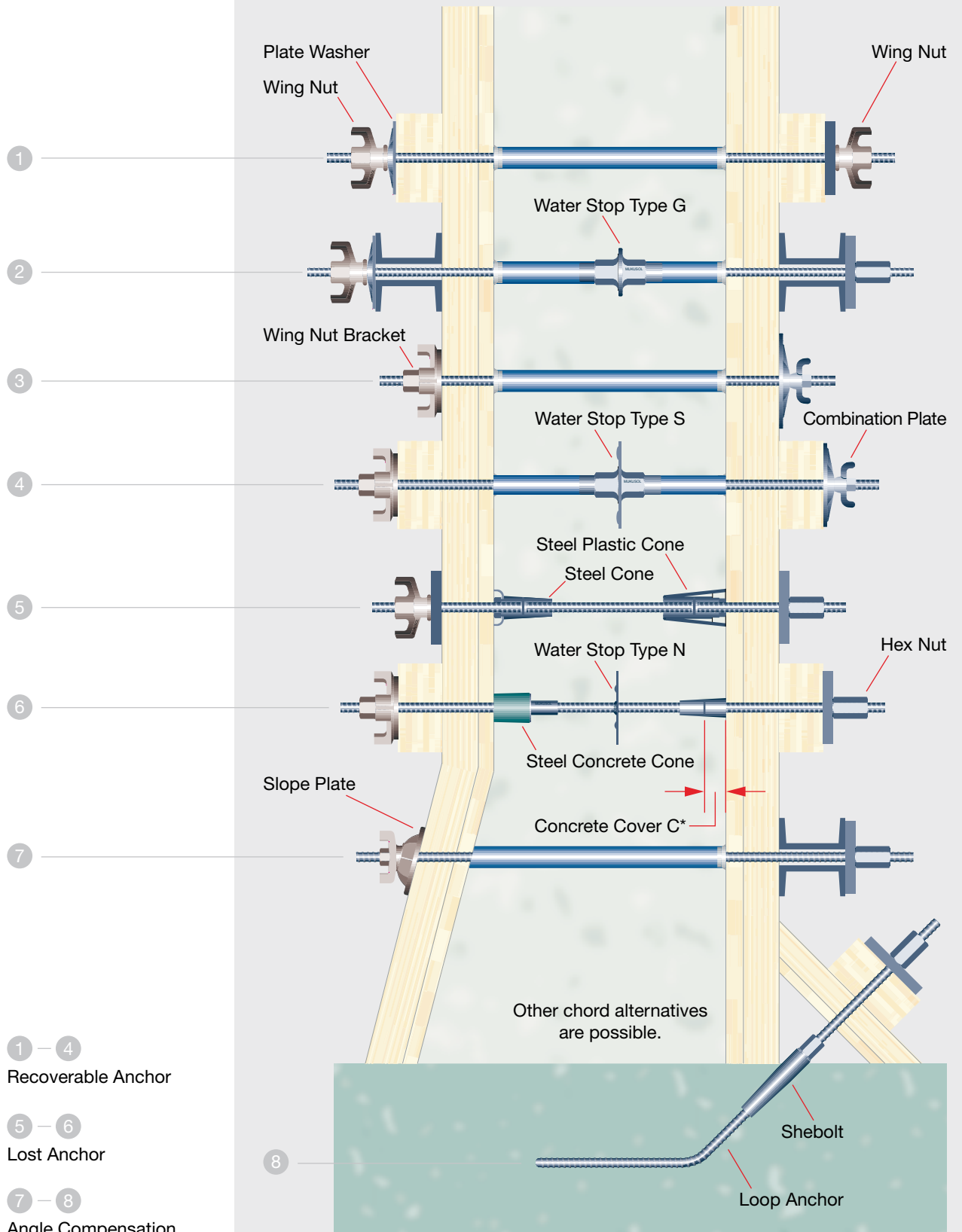
Proper use of Formties and Accessories is essential to prevent accidents and failures. All products are intended for use by qualified and experienced workmen. It's the user's responsibility to continually inspect working hardware for wear and to discard worn parts.

Improper use of the Formtie System can expose workers to extreme danger that may result in severe injury or death.



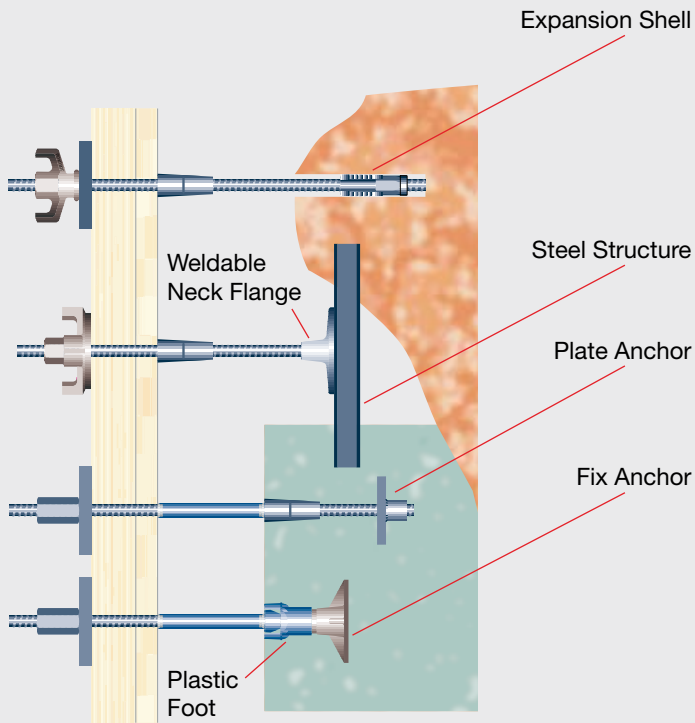
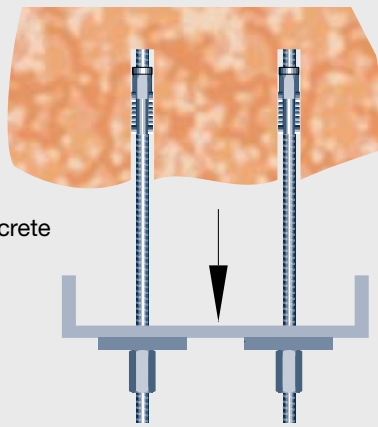
# Application Examples

We are the specialist for the DYWIDAG Formtie System. We manufacture, assemble and supply anchor bars and the complete range of accessories for bar diameters 12.5, 15, 20 and 26.5 mm. All products are designed according to international standards and building codes. Our own in-house testing laboratory and a permanent external monitoring guarantee the continuous high quality of our products.

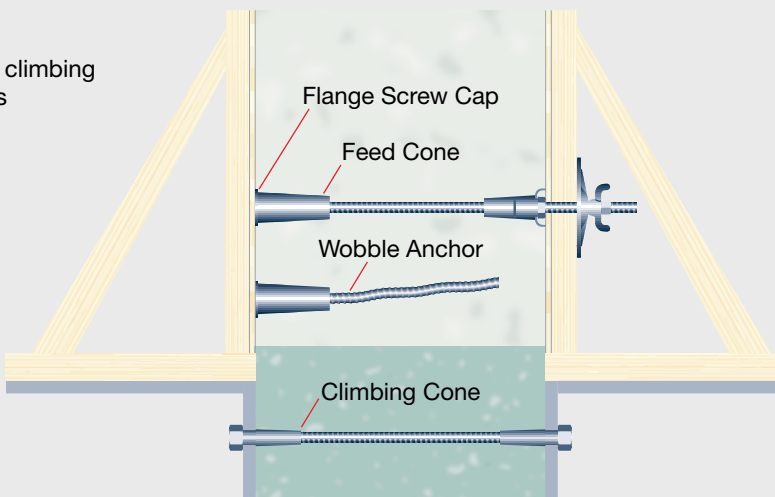


\* Length of Lost Anchor = Wall Thickness - 2 x Concrete Cover C

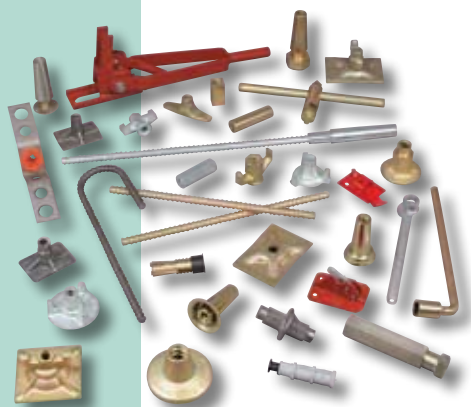
Suspensions in rock or concrete with expansion shells



Cones for climbing formworks



Subject to technical alterations.



## Technique Béton

Z.I. Avenue Albert Einstein – B.P. 95  
77552 Moissy-Cramayel Cedex  
France  
Phone + 33 1 64 13 30 00  
Fax + 33 1 60 60 21 28  
E-mail: [export@technique-beton.fr](mailto:export@technique-beton.fr)

ARGENTINA  
AUSTRALIA  
AUSTRIA  
BELGIUM  
BOSNIA AND HERZEGOVINA  
BRAZIL  
CANADA  
CHILE  
COLOMBIA  
COSTA RICA  
CROATIA  
CZECH REPUBLIC  
DENMARK  
EGYPT  
ESTONIA  
FINLAND  
FRANCE  
GERMANY  
GREECE  
GUATEMALA  
HONDURAS  
HONGKONG  
INDONESIA  
IRAN  
ITALY  
JAPAN  
KOREA  
LEBANON  
LUXEMBOURG  
MALAYSIA  
MEXICO  
NETHERLANDS  
NORWAY  
OMAN  
PANAMA  
PARAGUAY  
PERU  
POLAND  
PORTUGAL  
QATAR  
SAUDI ARABIA  
SINGAPORE  
SOUTH AFRICA  
SPAIN  
SWEDEN  
SWITZERLAND  
TAIWAN  
THAILAND  
TURKEY  
UNITED ARAB EMIRATES  
UNITED KINGDOM  
URUGUAY  
USA  
VENEZUELA

[www.technique-beton.com](http://www.technique-beton.com)